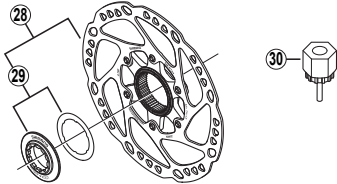
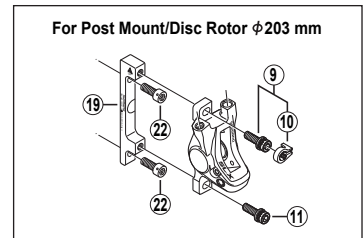
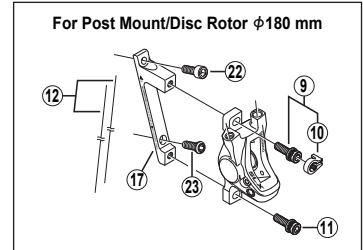
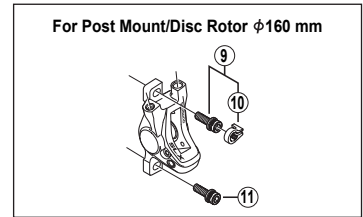
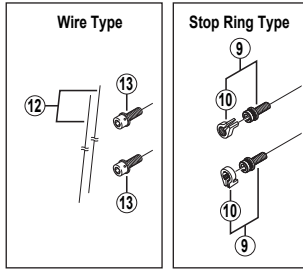
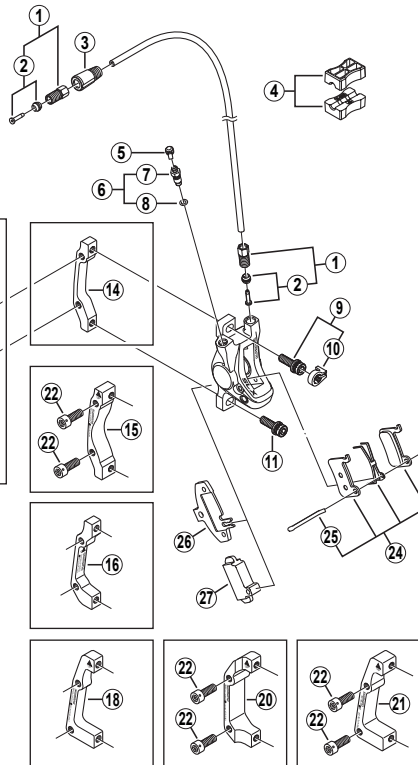
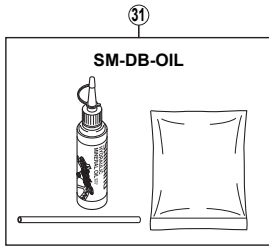


SHIMANO SLX Front Disc Brake

BR-M665 Brake Caliper
SM-RT64 Disc Rotor

SM-BH59 Brake Hose



ITEM NO.	SHIMANO CODE NO.	DESCRIPTION	INTERCHANGEABILITY
1	Y-8H2 98010	Connecting Bolt Unit	
2	Y-8H2 98020	Olive & Connecting Insert	
3	Y-8H2 03010	Cover	
4	Y-8H1 98030	TL-BH61 Special Tool (2 pcs.)	
5	Y-8B2 14000	Bleed Nipple Cap	
6	Y-8CL 98050	Bleed Nipple & Seal Ring	
7	Y-8CL 24000	Bleed Nipple	
8	Y-8B5 11001	O-Ring for Bleed Nipple	
9	Y-8DS 98010	Adapter Fixing Bolt (M6 x 18.7) & Stop Ring	
10	Y-8C5 11000	Stop Ring	
11	Y-8C5 09020	Adapter Fixing Bolt (M6 x 18.7) for Stop Ring Type	
12	Y-8B2 98010	Wire (2 pcs.)	
13	Y-8B5 12000	Adapter Fixing Bolt (M6 x 19) for Wire Type	
14	Y-8DB1 1100	A-Standard Mount Adapter for Disc Rotor φ160 mm	
15	Y-817 12000	Marzocchi Mount Adapter (SM-MA-F160P/Z) for Disc Rotor φ160 mm	
16	Y-817 31000	A-Standard Mount Adapter (SM-MA-F180P/S) for Disc Rotor φ180 mm	
17	Y-817 34000	Post Mount Adapter (SM-MA-F180P/P) for Disc Rotor φ180 mm	
18	Y-8CZ 01000	A-Standard Mount Adapter (SM-MA-F203P/S) for Disc Rotor φ203 mm	
19	Y-8CZ 01030	Post Mount Adapter (SM-MA-F203P/P) for Disc Rotor φ203 mm	
20	Y-8CZ 01020	Boxxer Mount Adapter (SM-MA-F203P/B) for Disc Rotor φ203 mm	
21	Y-817 22000	Marzocchi Mount Adapter (SM-MA-F203P/Z) for Disc Rotor φ203 mm	
22	Y-8B2 32200	Adapter Fixing Bolt (M6 x 15)	
23	Y-8AA 43130	Adapter Fixing Bolt (M6 x 15)	
24	Y-8EP 98010	Resin Pad (A01S) & Spring w/Split Pin	
	Y-8CL 98010	Metal Pad (M06) & Spring w/Split Pin	
25	Y-8DB 06000	Split Pin	
26	Y-8CL 12000	Pad Spacer	
27	Y-8CL 18000	Spacer for Bleeding	
28	I-SMRT64	SM-RT64 Disc Rotor Unit (φ160 mm)	
	I-SMRT64M	SM-RT64M Disc Rotor Unit (φ180 mm)	
	I-SMRT64L	SM-RT64L Disc Rotor Unit (φ203 mm)	
29	Y-8CL 98090	Lock Ring & Washer	
30	Y-120 09230	TL-LR15 Lock Ring Removal Tool	
31	Y-839 98010	Mineral Oil Bleed Kit (50 ml)	

A: Same parts.

B: Parts are usable, but differ in materials, appearance, finish, size, etc.
 Absence of mark indicates non-interchangeability.

0804-2801

Specifications are subject to change without notice.

SHIMANO