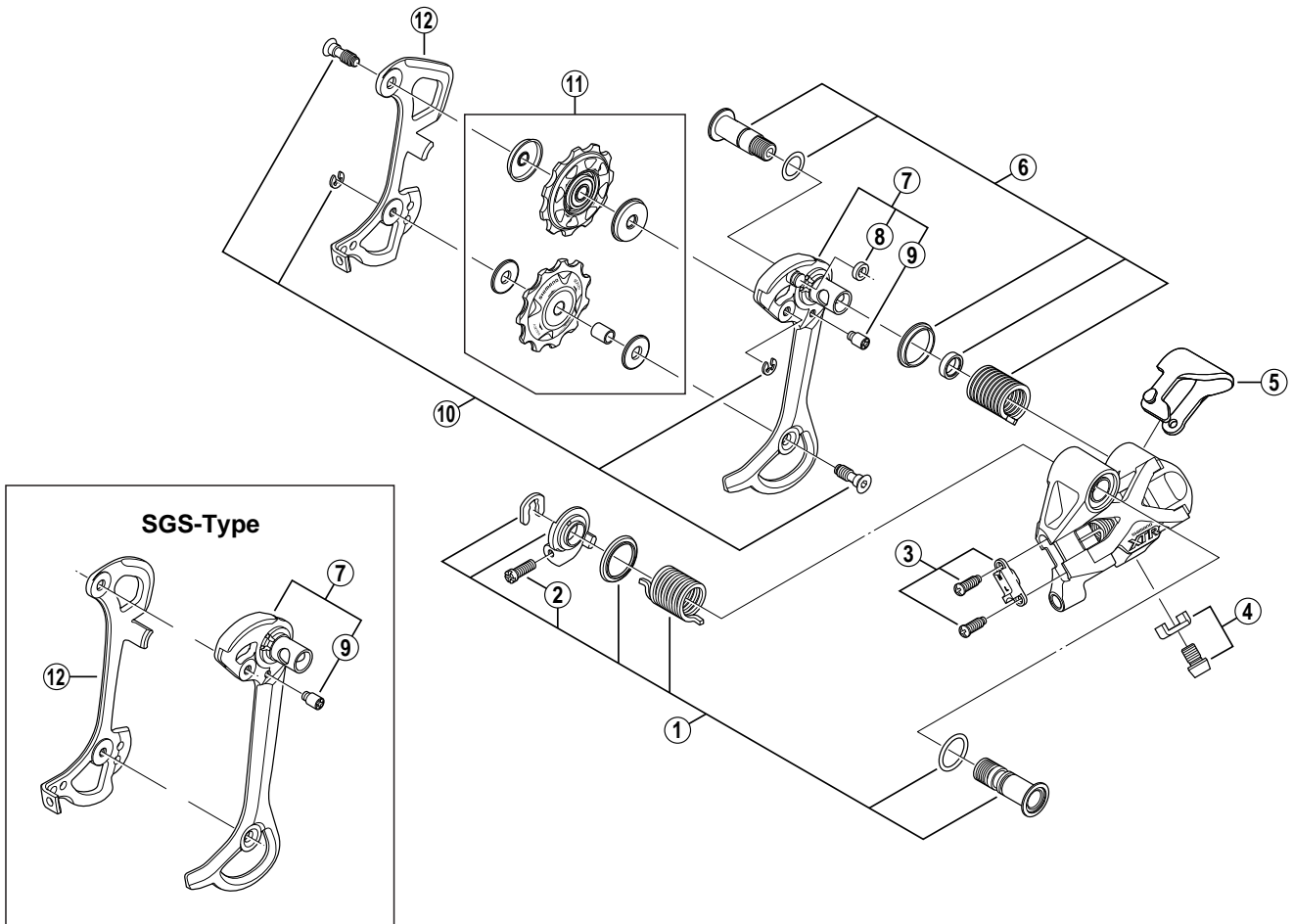


XTR Rear Derailleur (9-Speed)

RD-M971-GS Long Cage

RD-M971-SGS Super Long Cage



RD-M970
RD-M960
RD-M761

ITEM NO.	SHIMANO CODE NO.	DESCRIPTION	INTERCHANGEABILITY
1	Y-5VW98010	B-Axle Assembly	A B
2	Y-53M 21000	B-Tension Adjusting Screw (M4 x 12)	A A B
3	Y-5VW98020	Stroke Adjusting Screws (M4 x 11.5) & Plate	A
4	Y-5VW98030	Cable Fixing Bolt (M6 x 8) & Plate	A
5	Y-5U5 25100	Cover	A B
6	Y-5VW98040	Plate Axle Assembly	A B
7	Y-5VW98050	Outer Plate Assembly (GS-Type)	A B
	Y-5VW98060	Outer Plate Assembly (SGS-Type)	A B
8	Y-5U5 26000	Outer Plate Pin Cover	A A
9	Y-559 19200	Plate Stopper Pin	A B
10	Y-5VW98090	Pulley Bolt Unit	A B B
11	Y-5VW98100	Tension & Guide Pulley Set	A B B
12	Y-5U5 09100	Inner Plate (GS-Type)	A B B
	Y-5U5 10100	Inner Plate (SGS-Type)	A B

A: Same parts.

B: Parts are usable, but differ in materials, appearance, finish, size, etc.

Absence of mark indicates non-interchangeability.

0607-2607

Specifications are subject to change without notice.

SHIMANO