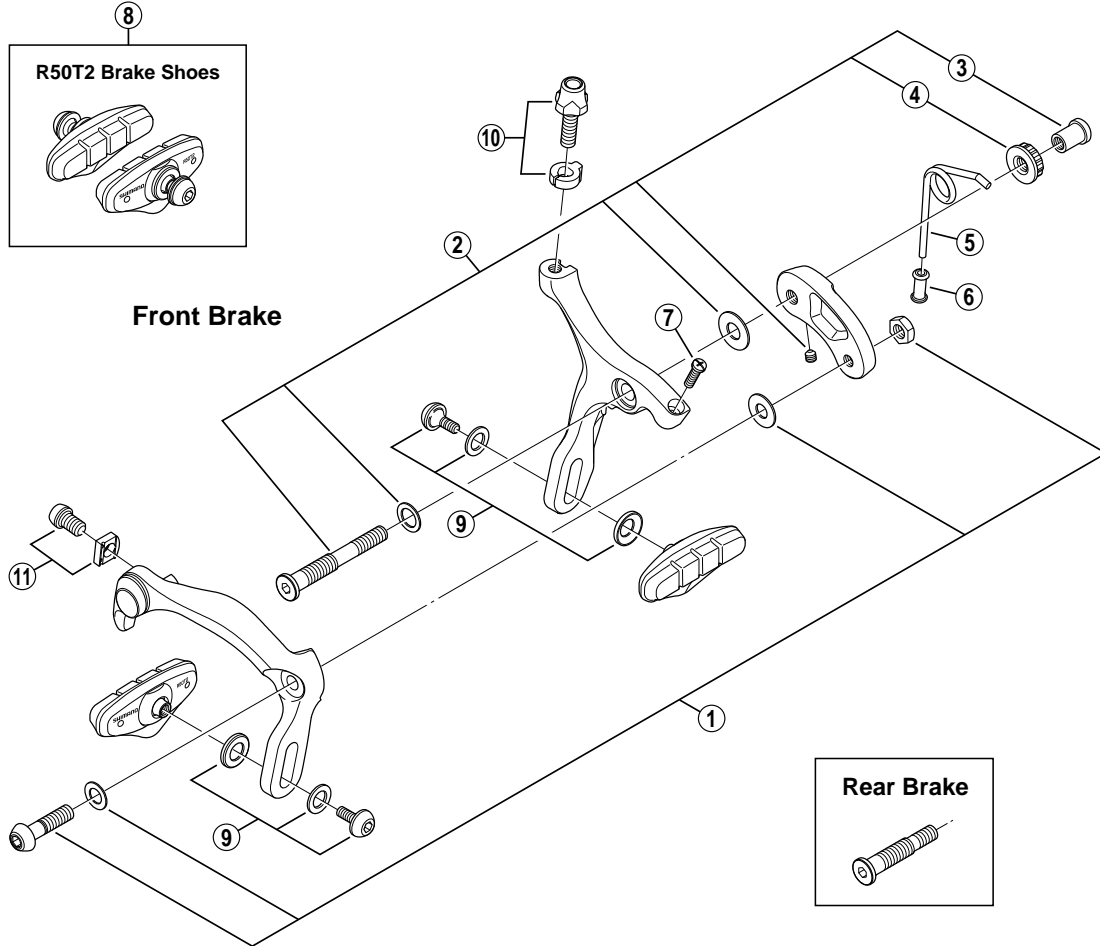


Caliper Brake BR-R450



ITEM NO.	SHIMANO CODE NO.	DESCRIPTION	INTERCHANGEABILITY	
1	Y-8EV 98010	Arm Bolt Unit (M6 x 23.5)	A	
	Y-8EV 98020	Front Pivot Bolt Assembly {Pivot Bolt: 51.4 mm (2") / Pivot Nut: 10.5 mm}		
	Y-8EV 98030	Front Pivot Bolt Assembly {Pivot Bolt: 51.4 mm (2") / Pivot Nut: 12.5 mm}		
2	Y-8EV 98040	Front Pivot Bolt Assembly {Pivot Bolt: 51.4 mm (2") / Pivot Nut: 18.0 mm}		
	Y-8EV 98050	Front Pivot Bolt Assembly {Pivot Bolt: 51.4 mm (2") / Pivot Nut: 27.0 mm}		
	Y-8EV 98060	Rear Pivot Bolt Assembly {Pivot Bolt: 36.7 mm (1-7/16") / Pivot Nut: 10.5 mm}		
	Y-855 75110	Pivot Nut (10.5 mm) for Front/Rear	A	A
	Y-855 75020	Pivot Nut (12.5 mm) for Front	A	A
	Y-855 74010	Pivot Nut (18.0 mm) for Front	A	A
	Y-8A0 23000	Pivot Nut (27.0 mm) for Front	A	A
4	Y-8BC06000	Lock Nut	A	A
5	Y-81U 09200	Arm Spring	A	
6	Y-8BY 08000	Spring Guide	A	
7	Y-81U 10100	EC-Screw (M4 x 12.5)	B	
8	Y-8E6 98010	R50T2 Brake Shoe Set (5 pairs)	A	
9	Y-8E6 98030	Shoe Fixing Bolt Unit (M5 x 11.2)	A	
10	Y-8BY 98040	Cable Adjusting Bolt (M6 x 19.3) & Clip	A	
11	Y-8BT 98010	Cable Fixing Bolt (M6 x 9) & Plate	A	

A: Same parts.

B: Parts are usable, but differ in materials, appearance, finish, size, etc.

Absence of mark indicates non-interchangeability.

BR-4500
BR-R650

0707-2736

Specifications are subject to change without notice.

SHIMANO