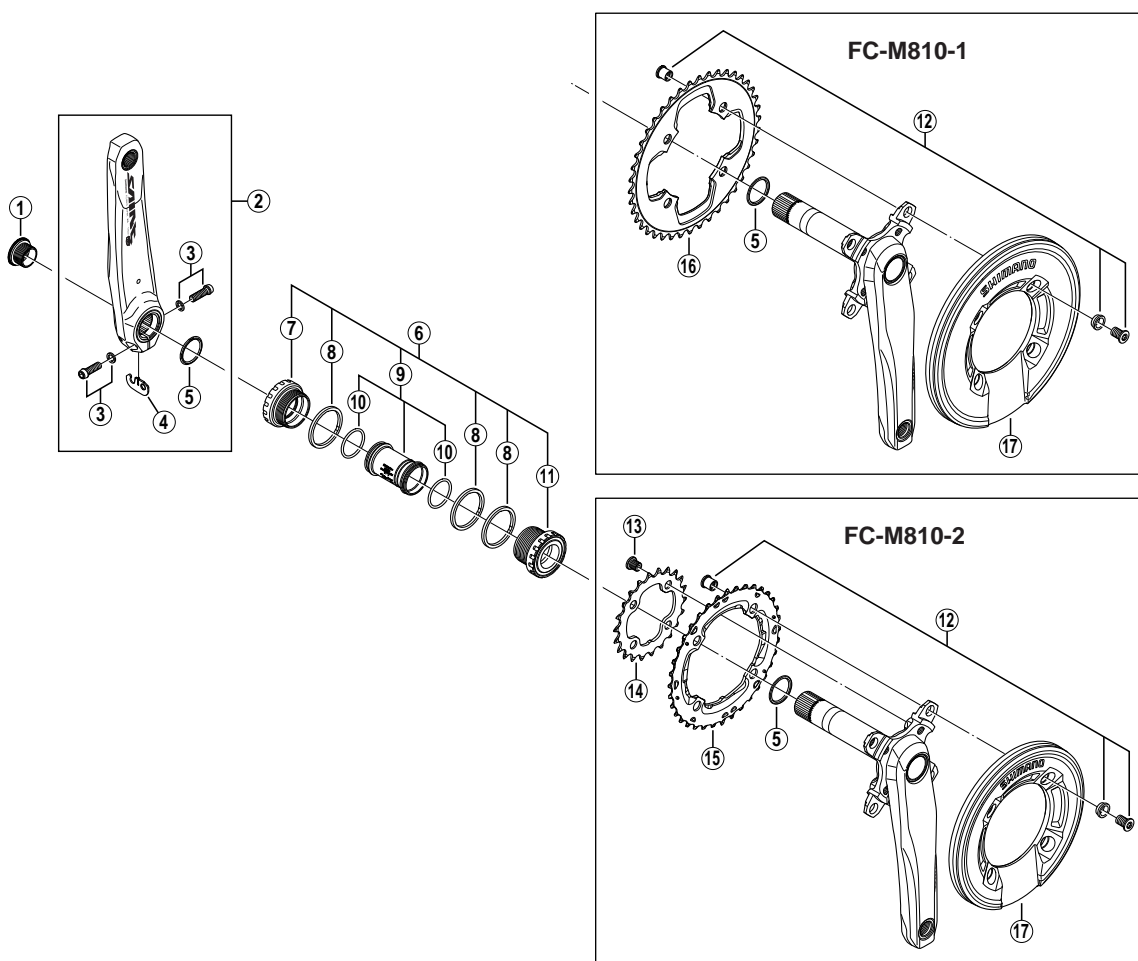


SAINT Front Chainwheel

FC-M810-2

FC-M810-1



• Bolt circle diameter: 104 mm...(For outer gear), 64 mm...(For inner gear)

ITEM NO.	SHIMANO CODE NO.	DESCRIPTION	INTERCHANGEABILITY	
1	Y-1KK13000	Crank Arm Fixing Bolt	A	
2	Y-1KK98010	Left Hand Crank Arm 165 mm	A	
	Y-1KK98020	Left Hand Crank Arm 170 mm	A	
	Y-1KK98030	Left Hand Crank Arm 175 mm	A	
3	Y-1G3 98010	Clamp Bolt (M6 x 19) & Washer	A	A
4	Y-1KK98040	Plate	A	
5	Y-1F3 16000	Ring	A A	
6	Y-1KK98050	Adapter Unit		
7	Y-1KK98060	Left Hand Adapter (B.C.1.37" x 24T) English Thread	A	
8	Y-1F8 13000	Spacer (2.5 mm)	A	A
9	Y-1KK98070	Inner Cover & O-Ring		
10	Y-1TF 21000	O-Ring	A	
11	Y-1KK98080	Right Hand Adapter (B.C.1.37" x 24T) English Thread	A	
12	Y-1KK98090	Fixing Bolt Unit (M8 x 12 / 4 sets)	A	
13	Y-1J1 98110	Inner Gear Fixing Bolt (M8 x 8.5 / 4 pcs.)	A	A
14	Y-1J1 22000	Chainring 22T (Black)	A	
15	Y-1KG98050	Chainring 36T (Black)	A	
	Y-1KJ 34000	Chainring 34T (Black)	A	
	Y-1KJ 36000	Chainring 36T (Black)	A	
	Y-1KJ 38000	Chainring 38T (Black)	A	
	Y-1KJ 40000	Chainring 40T (Black)	A	
16	Y-1KJ 42000	Chainring 42T (Black)	A	
	Y-1KK18000	Bash Guard M for 34T/36T	A	
	Y-1KJ 18000	Bash Guard L for 38T/40T/42T	A	

FC-M815
FC-M1665

A: Same parts.

B: Parts are usable, but differ in materials, appearance, finish, size, etc.
Absence of mark indicates non-interchangeability.

0804-2822

Specifications are subject to change without notice.

SHIMANO