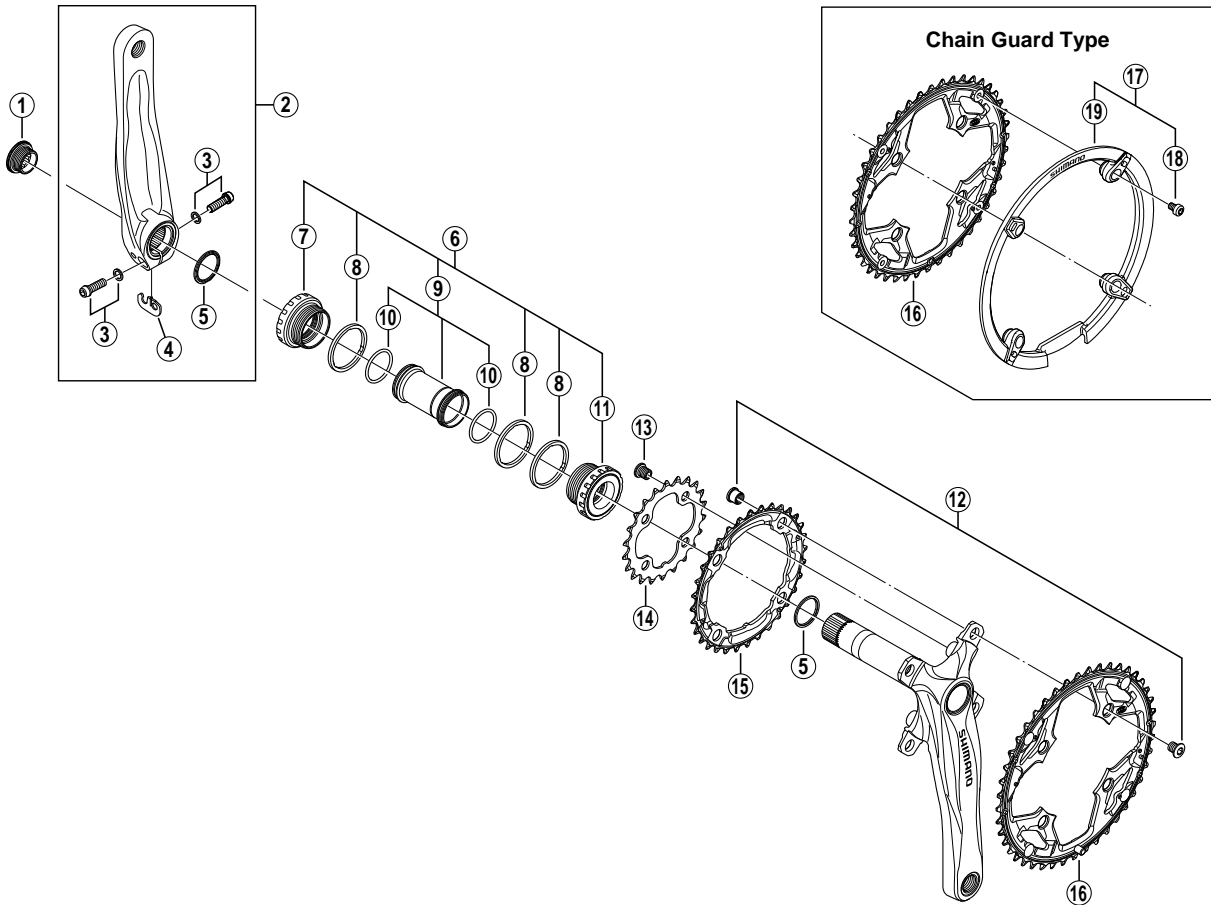


Front Chainwheel

FC-M542-S Silver Version

FC-M542-L Black Version



- Bolt circle diameter: 104 mm...(For outer gear and middle gear), 64 mm...(For inner gear)

ITEM NO.	SHIMANO CODE NO.	DESCRIPTION	INTERCHANGEABILITY
1	Y-1F8 11100	Crank Arm Fixing Bolt	A
2	Y-1JA 98010	Left Hand Crank Arm 170 mm (Silver) for FC-M542-S	B
	Y-1JA 98020	Left Hand Crank Arm 170 mm (Black) for FC-M542-L	B
	Y-1JA 98030	Left Hand Crank Arm 175 mm (Silver) for FC-M542-S	B
	Y-1JA 98040	Left Hand Crank Arm 175 mm (Black) for FC-M542-L	B
3	Y-1G3 98010	Clamp Bolt (M6 x 19) & Washer	A
4	Y-1FU 98120	Plate	A
5	Y-1F3 16000	Ring	A
6	Y-1J8 98050	Adapter Unit	A
7	Y-1FU 98090	Left Hand Adapter (B.C.1.37" x 24T) English Thread	A
8	Y-1F8 13000	Spacer (2.5 mm)	A
9	Y-1J8 98060	Inner Cover & O-Ring	A
10	Y-1TF 21000	O-Ring	A
11	Y-1FU 98100	Right Hand Adapter (B.C.1.37" x 24T) English Thread	A
12	Y-1FM98020	Double Gear Fixing Bolt (M8 x 8.5) & Nut (4 sets)	A
13	Y-1FM98030	Inner Gear Fixing Bolt (M8 x 8.5 / 4 pcs.)	A
14	Y-1J8 22000	Chainring 22T (Silver)	A
15	Y-1FU 98020	Chainring 32T (Silver)	B
	Y-1JA 98050	Chainring 44T (Black)	B
	Y-1JA 98060	Chainring 44T (Black) for Chain Guard	B
17	Y-1J8 98090	Chain Guard & Fixing Bolts	A
18	Y-1CY 98020	Chain Guard Fixing Bolt (4 pcs.)	A
19	Y-1GX14000	Chain Guard	A

A: Same parts.

B: Parts are usable, but differ in materials, appearance, finish, size, etc.

Absence of mark indicates non-interchangeability.

FC-M532

0706-2681

Specifications are subject to change without notice.

SHIMANO