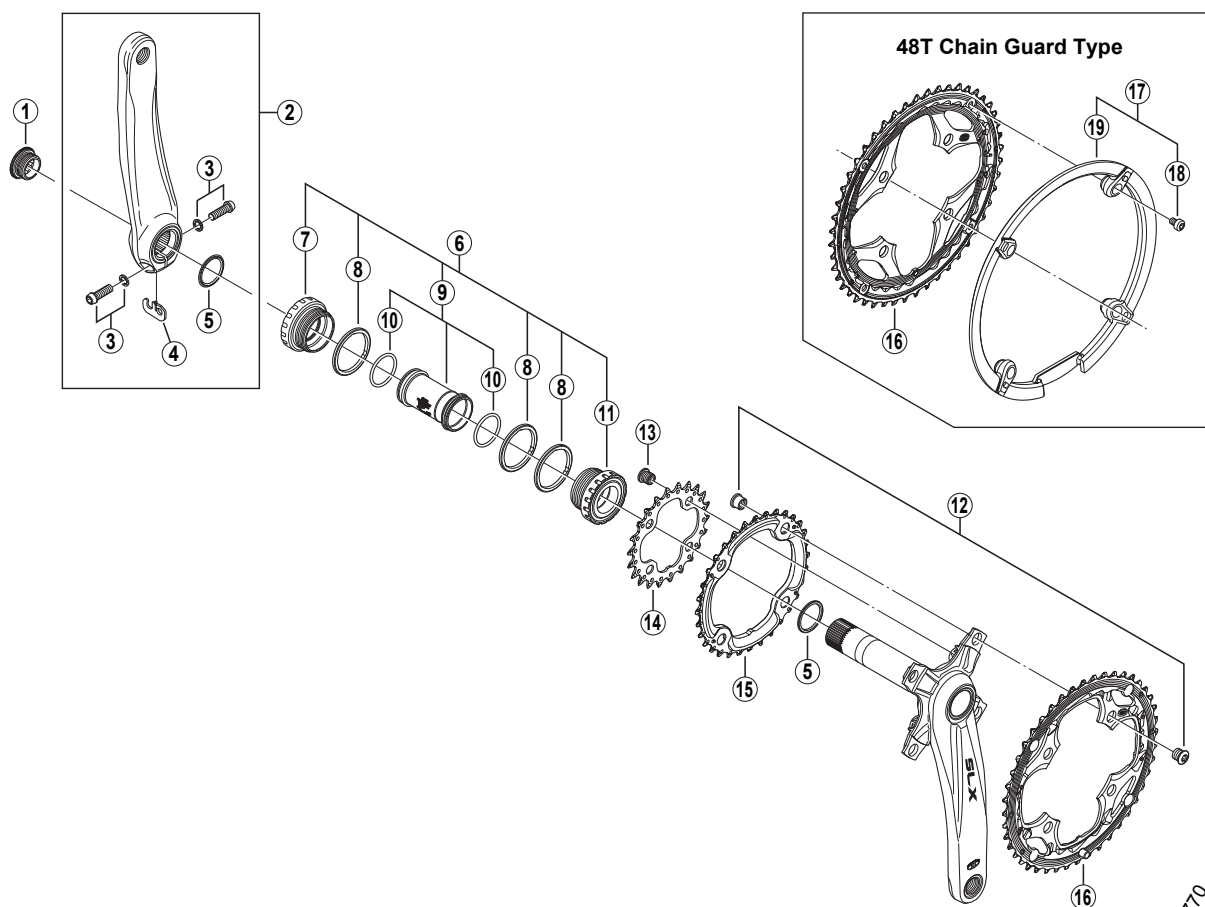


SHIMANO SLX Front Chainwheel FC-M660



- Chaining teeth combinations: 44 - 32 - 22T / 48 - 36 - 26T
- Bolt circle diameter: 104 mm... (For outer gear and middle gear), 64 mm... (For inner gear)

| ITEM NO. | SHIMANO CODE NO. | DESCRIPTION | INTERCHANGEABILITY |
|----------|------------------|--|--------------------|
| 1 | Y-1F8 11100 | Crank Arm Fixing Bolt | A B |
| 2 | Y-1KF 98010 | Left Hand Crank Arm 170 mm | B B B |
| | Y-1KF 98020 | Left Hand Crank Arm 175 mm | B B B |
| 3 | Y-1G3 98010 | Clamp Bolt (M6 x 19) & Washer | A A A |
| 4 | Y-1FU 98120 | Plate | A A A |
| 5 | Y-1F3 16000 | Ring | A A A |
| 6 | Y-1J1 98070 | Adapter Unit | A B B |
| 7 | Y-1J1 98080 | Left Hand Adapter (B.C.1.37" x 24T) English Thread | A B B |
| 8 | Y-1F8 13000 | Spacer (2.5 mm) | A A A |
| 9 | Y-1E5 98210 | Inner Cover & O-Ring | A A A |
| 10 | Y-1TF 21000 | O-Ring | A A A |
| 11 | Y-1J1 98090 | Right Hand Adapter (B.C.1.37" x 24T) English Thread | A B B |
| 12 | Y-1KF 98030 | Double Gear Fixing Bolt (TORX®*/M8 x 8.5) & Nut (4 sets) | B B B |
| 13 | Y-1J1 98110 | Inner Gear Fixing Bolt (TORX®*/M8 x 8.5 / 4 pcs.) | A B B |
| 14 | Y-1KF 22000 | Chainring 22T (Black) | B |
| | Y-1KS 26000 | Chainring 26T (Black) | |
| 15 | Y-1KF 98040 | Chainring 32T | B |
| | Y-1KF 98050 | Chainring 36T (Silver) | |
| | Y-1KF 98060 | Chainring 44T (Black) | B |
| 16 | Y-1KF 98070 | Chainring 48T (Black) | |
| | Y-1KF 98080 | Chainring 48T (Black) for Chain Guard | |
| 17 | Y-1KF 98090 | Chain Guard for 48T & Fixing Bolts | |
| 18 | Y-1KF 98100 | Chain Guard Fixing Bolt (4 pcs.) | |
| 19 | Y-1F9 12100 | Chain Guard for 48T | |

FC-M770
FC-M760
FC-M600-3

A: Same parts.

B: Parts are usable, but differ in materials, appearance, finish, size, etc.
Absence of mark indicates non-interchangeability.

* TORX is a registered trademark of Camcar LLC.

0904-2790B

Specifications are subject to change without notice.

SHIMANO