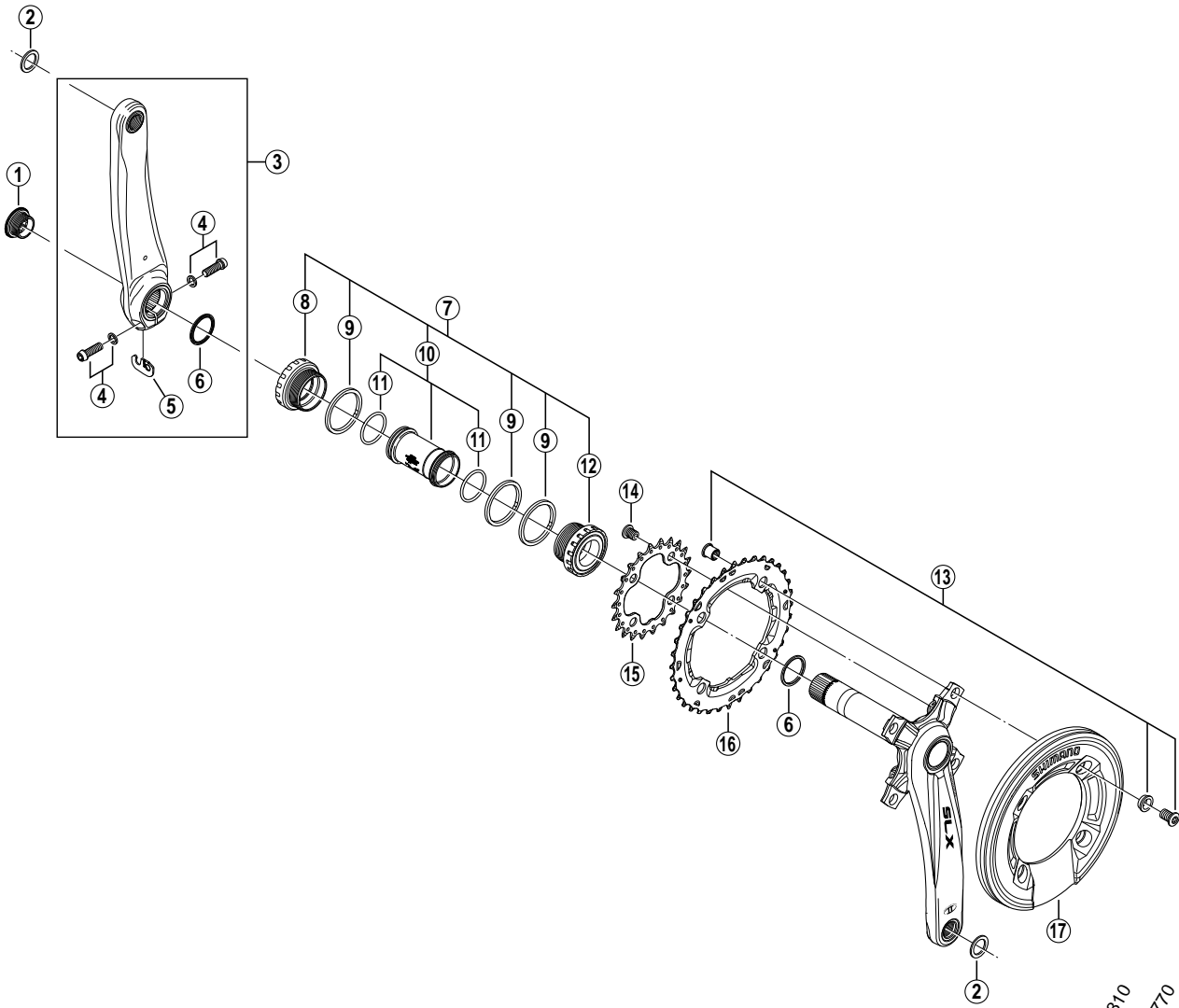


# SHIMANO SLX Front Chainwheel FC-M665



• Bolt circle diameter: 104 mm... (For outer gear), 64 mm... (For inner gear)

ITEM NO.	SHIMANO CODE NO.	DESCRIPTION	INTERCHANGEABILITY		
			FC-M810	FC-M770	FC-M660
1	Y-1F8 11100	Crank Arm Fixing Bolt		A	A
2	Y-1KG98010	Pedal Washer (2 pcs.)			
3	Y-1KG98020	Left Hand Crank Arm 170 mm			
	Y-1KG98030	Left Hand Crank Arm 175 mm			
4	Y-1G3 98010	Clamp Bolt (M6 x 19) & Washer	A	A	A
5	Y-1FU 98120	Plate		A	A
6	Y-1F3 16000	Ring	A	A	A
7	Y-1J1 98070	Adapter Unit		A	A
8	Y-1J1 98080	Left Hand Adapter (B.C.1.37" x 24T) English Thread		A	A
9	Y-1F8 13000	Spacer (2.5 mm)	A	A	A
10	Y-1E5 98210	Inner Cover & O-Ring		A	A
11	Y-1TF 21000	O-Ring		A	A
12	Y-1J1 98090	Right Hand Adapter (B.C.1.37" x 24T) English Thread		A	A
13	Y-1KG98040	Fixing Bolt Unit (M8 x 12 / 4 sets)			
14	Y-1J1 98110	Inner Gear Fixing Bolt (M8 x 8.5 / 4 pcs.)	A	A	A
15	Y-1KF 22000	Chainring 22T (Black)			A
16	Y-1KG98050	Chainring 36T (Black)			
17	Y-1KG13000	Bash Guard M			

A: Same parts.

B: Parts are usable, but differ in materials, appearance, finish, size, etc.

Absence of mark indicates non-interchangeability.

0804-2818

Specifications are subject to change without notice.

# SHIMANO