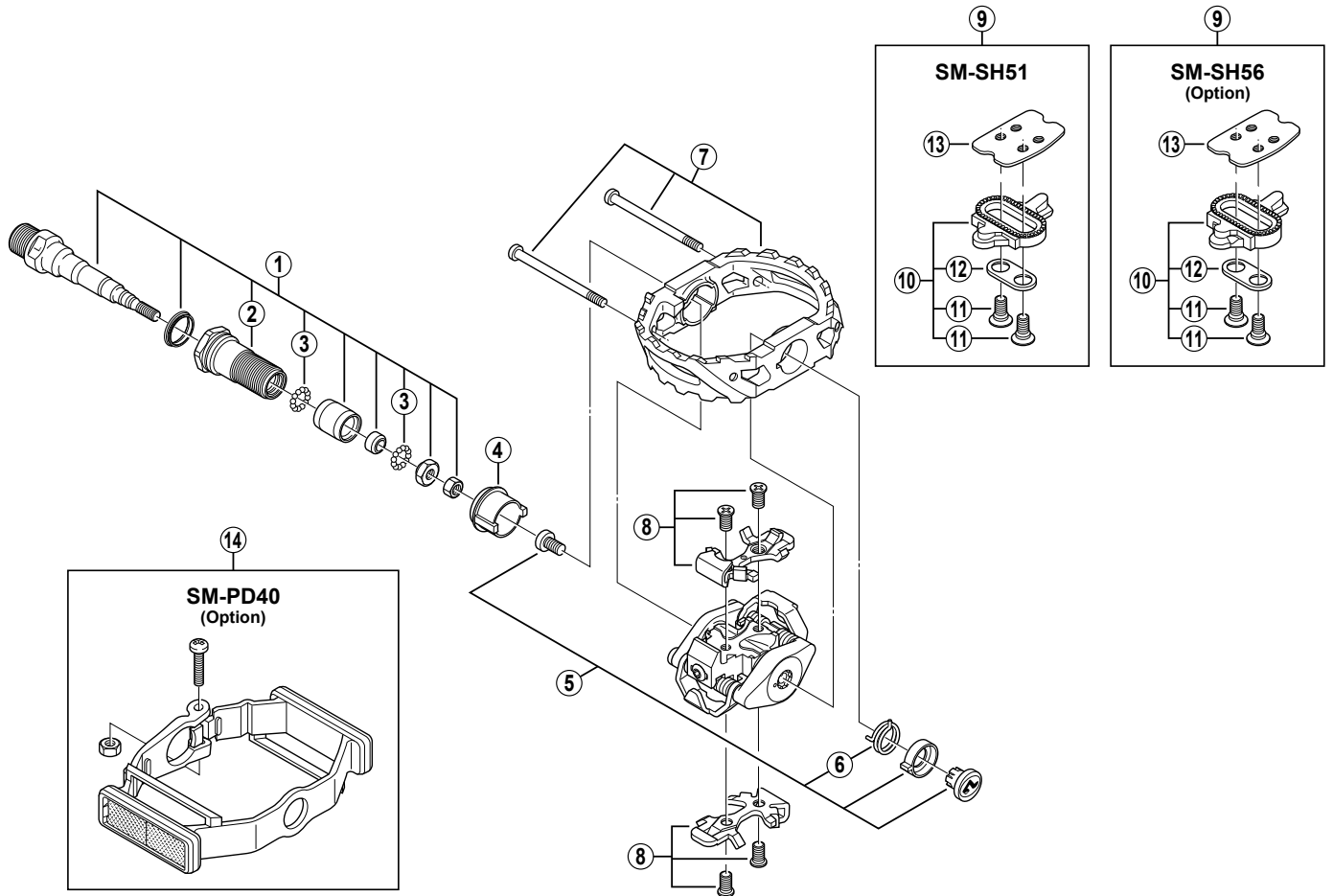


# SPD Pedals PD-M545



ITEM NO.	SHIMANO CODE NO.	DESCRIPTION
* 1	Y-41F 98060	Pedal Axle Assembly (Right / B.C. 9/16" x 20T.P.I.)
* 1	Y-41F 98070	Pedal Axle Assembly (Left / B.C. 9/16" x 20T.P.I.)
* 2	Y-41F 98080	Lock Bolt (Right)
* 2	Y-41F 98090	Lock Bolt (Left)
* 3	Y-41N 98030	Steel Ball (3/32") 62 pcs.
* 4	Y-41F 11300	Sleeve
5	Y-41F 98010	Cap Unit (Right)
	Y-41F 98020	Cap Unit (Left)
6	Y-41F 05000	Cage Spring (Right)
	Y-41F 06000	Cage Spring (Left)
7	Y-41F 98040	Cage (Right) & Bolts
	Y-41F 98050	Cage (Left) & Bolts
8	Y-41C 98011	Body Plate & Fixing Screws (M5)
* 9	Y-424 98200	SM-SH51 Cleat Set (Single Release Mode / Pair)
	Y-41S 98090	SM-SH56 Cleat Set (Multiple Release Mode / Pair)
* 10	Y-424 98201	SM-SH51 Cleat Set w/o Cleat Nut (Single Release Mode / Pair)
* 10	Y-41S 98100	SM-SH56 Cleat Set w/o Cleat Nut (Multiple Release Mode / Pair)
* 11	Y-417 04030	Cleat Fixing Bolt (1 pc.)
* 12	Y-424 23000	Cleat Adapter (1 pc.)
* 13	Y-40N 01000	Cleat Nut (1 pc.)
14	Y-41J 98010	SM-PD40 Reflector Unit (Pair)

0407-1752B