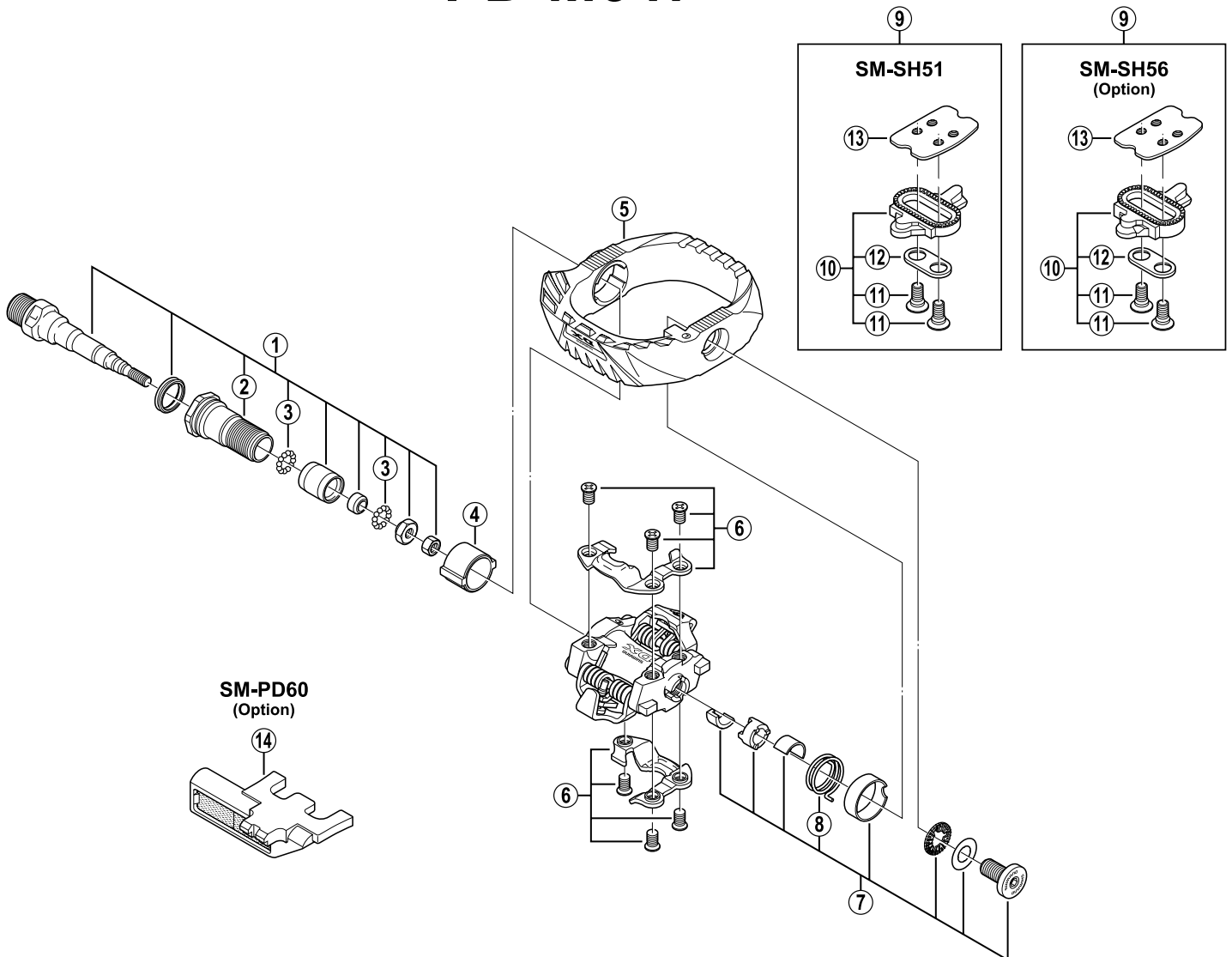


SHIMANO DX SPD Pedals  
**PD-M647**



Q'TY	ITEM NO.	SHIMANO CODE NO.	DESCRIPTION
	1	Y-41S 98010	Pedal Axle Assembly (Right / B.C. 9/16" x 20T.P.I)
		Y-41S 98030	Pedal Axle Assembly (Left / B.C. 9/16" x 20T.P.I)
	2	Y-41S 98020	Lock Bolt (Right)
		Y-41S 98040	Lock Bolt (Left)
	3	Y-41N 98030	Steel Ball (3/32") 62 pcs.
	4	Y-41S 14000	Sleeve
	5	Y-41S 08000	Cage (Right)
		Y-41S 09000	Cage (Left)
	6	Y-41S 98050	Body Cover (Right) & Fixing Bolts
		Y-41S 98060	Body Cover (Left) & Fixing Bolts
	7	Y-41S 98070	Cap Bolt Unit (Right)
		Y-41S 98080	Cap Bolt Unit (Left)
	8	Y-41S 12000	Cage Spring (Right)
		Y-41S 13000	Cage Spring (Left)
	* 9	Y-424 98200	SM-SH51 Cleat Set (Single Release Mode / Pair)
		Y-41S 98090	SM-SH56 Cleat Set (Multiple Release Mode / Pair)
	* 10	Y-424 98201	SM-SH51 Cleat Set w/o Cleat Nut (Single Release Mode / Pair)
		Y-41S 98100	SM-SH56 Cleat Set w/o Cleat Nut (Multiple Release Mode / Pair)
	11	Y-417 04030	Cleat Fixing Bolt (1 pc.)
	12	Y-424 23000	Cleat Adapter (1 pc.)
	13	Y-40N 01000	Cleat Nut (1 pc.)
	14	Y-40Z 98010	SM-PD60 Reflector Unit (Pair)
		Y-40Z 98020	SM-PD60 Reflector Unit (AS / Pair)