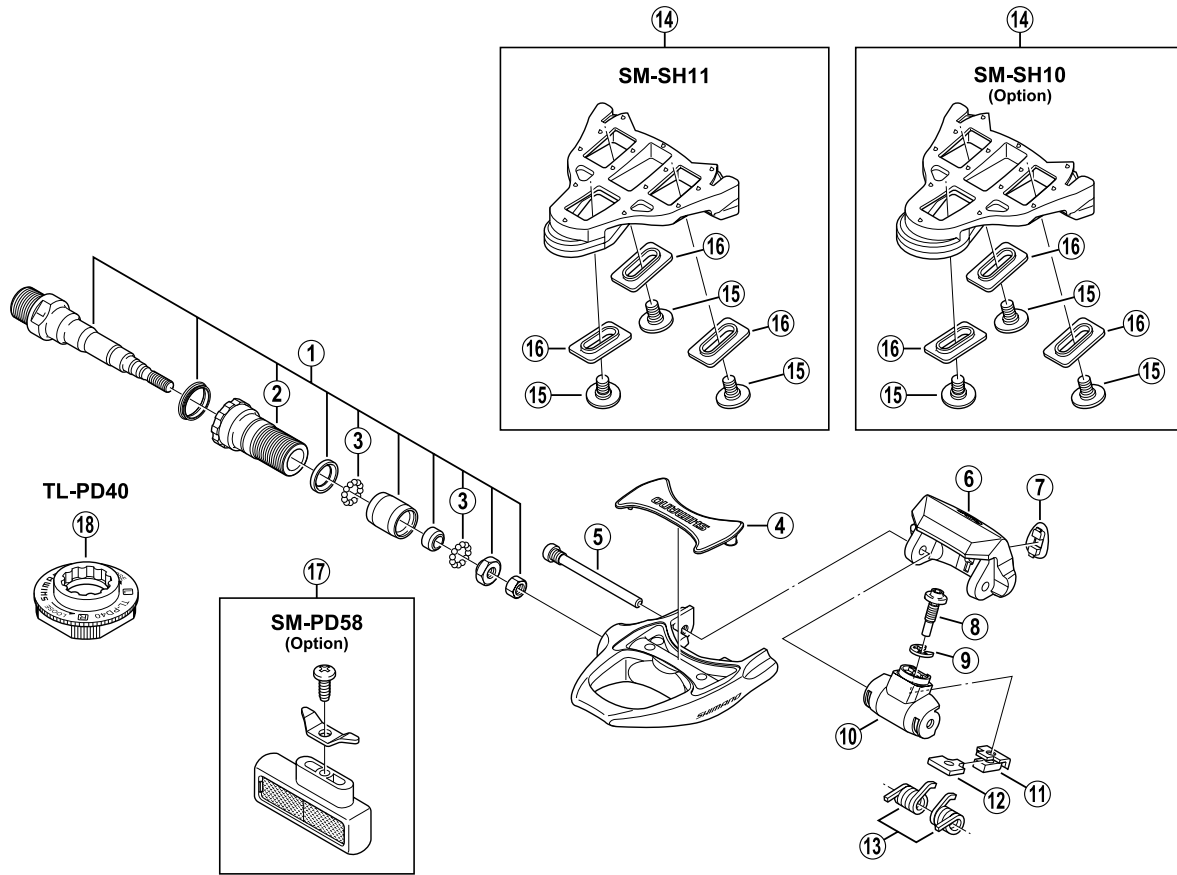


SHIMANO SPD-SL Pedals PD-R540



Note: Because the threaded part of the binding pin (item no. ⑤) has been coated with screw locking adhesive, after removal, a new binding pin should be used in place of the old pin.

ITEM NO.	SHIMANO CODE NO.	DESCRIPTION
* 1	Y-45K 98010	Pedal Axle Assembly (Right / B.C.9/16" x 20T.P.I.)
* 1	Y-45K 98020	Pedal Axle Assembly (Left / B.C.9/16" x 20T.P.I.)
2	Y-43Z 13100	Lock Bolt (Right)
	Y-43Z 14100	Lock Bolt (Left)
3	Y-41N 98030	Steel Ball (3/32") 62 pcs.
4	Y-45F 06000	Body Cover
5	Y-45F 05000	Binding Pin
6	Y-45F 03000	Binding
7	Y-45F 07000	Indicator
8	Y-45F 04000	Spring Adjustment Bolt
* 9	Y-42U 16010	Adjust E-Ring
10	Y-42U 11200	Spring Cover
11	Y-45F 09000	Adjust Plate Cover
12	Y-45F 08000	Adjust Plate
13	Y-42U 98050	Spring (2 pcs.)
14	Y-42U 98010	SM-SH11 Cleat Set (Self-aligning mode/Pair/M5 x 8 mm)
14	Y-42U 98020	SM-SH10 Cleat Set (Fixed mode/Pair/Option/M5 x 8 mm)
15	Y-42U 14200	Cleat Fixing Bolt (M5 x 8 mm / 1 pc.)
	Y-42U 98060	Cleat Fixing Bolt (M5 x 13.5 mm / 6 pcs. / Option)
16	Y-42U 15000	Cleat Washer (1 pc.)
17	Y-40R 98070	SM-PD58 Reflector Unit (Pair/Option)
	Y-40R 98080	SM-PD58 Reflector Unit (AS/Pair/Option)
18	Y-42A 09000	TL-PD40 Special Tool

0503-2304A